

# GIVING BACK TO THE FUTURE

A gift in your will  
secures the future  
of hospice care for  
local people



# 40 years of hospice care for our community

St Wilfrid's Hospice has proudly served local people for the last four decades, working to transform end of life care for the people of Eastbourne, Seaford, Hailsham, Uckfield, Heathfield, Pevensey and all the points in between.

We serve a population of 235,000, people covering an area of around 300 square miles. Our expert teams work to help people to live each day as best they can, as well as supporting their family and friends. We provide care in our 20-bed Inpatient Unit, through our Wellbeing Service and, increasingly, to families in their own homes.

**We want to see a community where people talk openly about dying, live well until the end of their life and where nobody dies alone, afraid or in pain.**

## **A community charity, funded by our community**

St Wilfrid's relies on voluntary gifts to pay for the care and support of seven in every 10 patients we see. Each day we invest over £16,000 in the provision of care and support services across our catchment area.

## **Gifts in wills are, and have always been, vital to our work**

Gifts in wills are St Wilfrid's largest single source of income. These kind, thoughtful gifts – often left in a will made many years before – have been the foundation of 40 years of local hospice care. These gifts, carefully saved over many years, allowed us to build our brand new hospice building in 2013. Gifts in wills gave us financial security when the pandemic began, making it possible for us to maintain all our services in the most difficult times we have ever faced.

Now, we ask all in our community to consider leaving a gift in their will to St Wilfrid's – to 'Give Back to the Future' – and create the foundation of hospice care for all local people, for years to come.



A member of our community nursing team

# “He made sure that his children, grandchildren and St Wilfrid’s Hospice were remembered in his will”

‘My dad became very close to St Wilfrid’s in the last few years of his life. It started when Mum became ill in 2013. They had been on a cruise round the fjords and she had come back complaining of pain in her stomach. It took a bit of nagging to get her to go to the hospital – but the results came back to show she had inoperable liver cancer.

‘The consultant only gave her a few months – and she was determined to be at home, with her favourite view out to Butts Brow from the back garden. Dad cared for her (which he had to learn quickly, Mum had always done everything) and for a while, they coped. But as her condition worsened, he struggled – and that’s when St Wilfrid’s arrived.

‘Mum and Dad would get a visit from two lovely Nurses most days. They’d give Mum the personal care she needed and check on her medications – but they’d also spend as much time with Dad as he needed. I know he really valued the fact that they were there for both of them. The Nurses visited right up to the end, and she slipped away in the August, in peace, with Dad and me there by her side.



John’s parents

‘After she died Dad was a regular visitor to the hospice. He loved going to their café, taking that day’s Telegraph crossword with him. He’d sit and have his usual cup of coffee and a cake (always an Eccles cake) and just chat to the staff. He’d built up a real relationship with Mum’s care team and the hospice was where he felt welcomed and comfortable.

‘I knew Dad had included St Wilfrid’s in his will, and to be honest I was really pleased. I knew how much the hospice meant to him and we were happy that he was able to support them financially as he had done in his later life. I realise now from talking to the hospice how vital gifts in wills are to them, it’s a crucial part of their income. I’m delighted Dad’s gift is going to be there to help them, so they can continue to care for other local people like Mum and him.’

**John Aviss**



Our family

# A gift left in a will supports local hospice care now – and for years in the future

**£18,368**

funded two whole days of care for every patient on our Inpatient Unit last year.



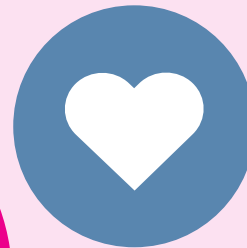
**£2,230**

Funded our Patient and Family Support Team to offer counselling and spiritual care and bereavement counselling for patients preparing for and living with the death of a family member.



**£2,226**

was given to our Wellbeing Services Team, making it possible for them to improve patients' mobility and independence through physiotherapy and occupational therapy.



**£15,585**

was invested in our Community Nursing and Care at Home service and paid for 389 specialist home care visits to local people.

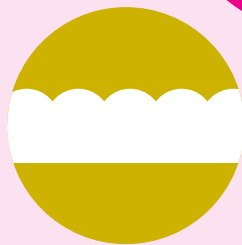


Mr R very kindly left a 'residuary' gift of £55,662 to St Wilfrid's. Here's how his generosity delivered – and is still delivering – vital care to local people.



**£9,462**

was spent immediately to replace specialist mattresses and air mattress pumps for some of our inpatient beds, ensuring comfort, support and a good night's rest for our patients.



**£6,122**

was spent supporting our Doctors and their expert palliative care, enabling patients to enjoy their best possible quality of life.

**£1,669**

was spent on our Nurse Line service offering 24-hour expert advice and support to patients, families and healthcare professionals.

'Mum died 11 days after her diagnosis. We'd hoped she'd be able to go to St Wilfrid's, but her condition deteriorated so quickly she was never able to leave the hospital. It was all so fast, Dad and I didn't have the chance to have time with her.

'Then, when Dad was diagnosed in 2017, I retired early to become his carer. We spent some really good times together; we bonded once more as Dad and daughter. I contacted St Wilfrid's early on and they supported me as his carer which I had to learn how to be. They helped me with practical advice but also on the financial support that was available to pay for dad's regular trips to the hospital.

'As his condition became worse, the hospice's care team came in to look after him at home. They kept him comfortable, made sure his medications were right. But, right at the end, it was clear he needed more support than he could have at home – and so we went into St Wilfrid's.

'It surprised us both how lovely it was. So bright and airy, warm and welcoming. Dad was given one of the 'Park' rooms with a lovely view out into the garden. I came to visit him at least once every day in the two weeks he was there. The Nurses gave him all the care and attention he needed and managed his medications to make sure his symptoms were under control.

'On his last day I was there in the afternoon and again that evening – but he just slipped away in the night. I wasn't there – but that was just fine. I was content to know he was in the right place, getting the very best care he could have had.

**“Mum didn't have the chance to come to St Wilfrid's – but they gave Dad the most incredible care for the last year of his life”**



Christine's Mum and Dad



Christine in her volunteer role

'Now I'm trying to give back as best I can. I volunteer twice a week in the hospice shop – working alongside others who have also known St Wilfrid's care. I know what a challenge it is for the hospice to continually find the money it needs to care for people like Dad – and I know how important giving in wills is to the hospice.

'I have made my will – and part of my estate will go to St Wilfrid's. The care my Dad received was made possible, in part, because someone years before made a thoughtful decision to leave a gift. It's important, and a comfort, for me to know that my legacy gift will enable another Mum or Dad to have the same care in the future.'

**Christine Bartholomew Jones**

# Your will can make sure that those you care about are provided for tax efficiently

A will is a vital document for you, ensuring that those you care about are provided for after your death. Without a valid will, the specific wishes you may have for your family or loved ones may not be carried out as you would like. The final value of your estate after tax can often be significantly reduced.

If you have not yet made a will, it is strongly recommended that you do so. It is a simple process that most solicitors will be able to assist with. The Law Society offers a free Find a local Solicitor service which can be found at The Law Society's website, [lawsociety.org.uk](http://lawsociety.org.uk) – or by calling **020 7320 5650**.

St Wilfrid's will be holding a 'Make a Will Month' in September. If you are planning to include St Wilfrid's in your will, the solicitors listed in the panel, below, will kindly make your will free of charge during this month.

Please see [stwhospice.org/make-a-will-month](http://stwhospice.org/make-a-will-month) for further information.

You are also able to make your will online, more details of this method are here:

[stwhospice.org/makeawillonline](http://stwhospice.org/makeawillonline)

## **Barwells**

6 Hyde Gardens  
EASTBOURNE  
BN21 4PN  
01323 411505

## **Barwells**

10 Sutton Park Road  
SEAFORD  
BN25 1RB  
01323 899331

## **Barwells**

19 High Street  
NEWHAVEN  
BN9 9PU  
01273 514213

## **Barwells**

2 Market Square  
HAILSHAM  
BN27 1AG  
01323 814010

## **Barwells**

238 South Coast Road  
PEACEHAVEN  
BN10 8JS  
01273 582271

## **Cornfield Law LLP**

47 Cornfield Road  
EASTBOURNE  
BN21 4QN  
01323 412512

## **Heringtons**

37-39 Gildredge Road  
EASTBOURNE  
BN21 4RX  
01323 411020

## **Keyte Legal Ltd**

49 Station Road  
POLEGATE  
BN26 6EA  
07903 024932

## **McCarthy Webb**

Wish Mews  
21 Wish Road  
EASTBOURNE  
BN21 4NX  
01323 400530

## **Parfitt Cresswell**

4a Kingfisher Court  
Bellbrook Industrial Estate  
UCKFIELD  
TN22 1QQ  
01825 705180

## **Stephen Rimmer LLP**

28-30 Hyde Gardens  
EASTBOURNE  
BN21 4PX  
01323 644222

# Your gift could be celebrated on our Sculpture Wall – a permanent remembrance of your generosity

Every gift in a will we receive helps us to care for local people living with a life-limiting condition. We thank each gift we receive through inclusion in our electronic 'Living Legacy' book at the hospice entrance.

We celebrate all gifts over £100,000 by placing a new leaf, engraved with your name, on the Sculpture Wall in our hospice in Eastbourne.

Proudly displayed for all who visit the hospice to see, it acts as a permanent reminder of those who have made the considered, thoughtful decision to make their gift to local hospice care.



## “Hello, my name is Roz and I administer the legacy gifts at St Wilfrid’s”



There are so many ways that people contribute to the care St Wilfrid's provides, but a gift in a will is probably one of the easiest and most effective gifts anyone can give.

Making or changing a will that provides for those who are close to you, while ensuring that your specific wishes are met, is not something to be taken lightly. So, if you would like to discuss what arrangement might be best for you, please do get in touch with me to arrange a visit, or perhaps just an informal chat.

Please email me at [rozelyn.bristowe@stwhospice.org](mailto:rozelyn.bristowe@stwhospice.org) or call **01323 434214**.

**Roz Bristowe**  
Donor Development Manager

# There are different ways you can support hospice care for local people with a gift in your will

There are several kinds of gifts you can leave. Each gift is special to us and ensures that we're able to provide the very best care and support to those who need us, today and into the future.

- **A cash (or 'pecuniary') gift**

This is when you choose to leave a single, precise cash gift from your estate.

- **A specific gift**

This type of gift is usually something like property or an individual valuable item, such as an antique or piece of jewellery.

- **A life interest**

If you wish, you can leave a gift for use over a specific period – for example, the income from an investment. After that time has passed, the gift could then be passed on to another recipient or family member.

- **A share of your estate or 'residuary' gift**

After you've provided for your loved ones and taxes have been paid, you could choose to leave a share or the full remainder (the residue) of your estate to St Wilfrid's. This means that your estate is passed on to those you care about as well as supporting hospice care into the future.

- **A house clearance**

St Wilfrid's has for many years offered a bespoke house clearance service. Here, you would identify the specific items or belongings you wish to leave to your loved ones – and then leave the remainder to St Wilfrid's. Our team of staff and volunteers will then sensitively arrange to come and clear your house of remaining furniture and belongings which we will then sell on in the most effective way possible – the proceeds all going towards local hospice care.

## **Inheritance Tax**

Good financial planning is essential to maximise the sum you are able to leave to your loved ones. Everyone has a tax-free allowance of £325,000 (correct as of July 2021) before Inheritance Tax at 40% becomes due (plus a further £175,000 if the family home is passed directly to their descendants). All gifts to charities such as St Wilfrid's are deducted from the value of the estate before Inheritance Tax is calculated. This means that a gift towards local hospice care can reduce the total amount of Inheritance Tax due. Those who give 10% of their estate to charity will receive a reduction of inheritance tax from 40% to 36% on the balance.

For more information, please speak to your solicitor or visit the HMRC website:

**[hmrc.gov.uk/inheritancetax](https://www.hmrc.gov.uk/inheritancetax)**



One of our Nurses with a patient in the hospice



# Suggested wordings to help you make your gift

We strongly recommend using a specialist Solicitor or will-writing expert to help create or change your will. They can advise and support you to ensure that your estate is distributed exactly according to your wishes and on how to minimise the impact of Inheritance Tax.

If you do decide to leave a gift in your will to St Wilfrid's, you will need to provide clear and unambiguous instruction to your executors. Here is some wording we recommend you discuss with your solicitor:

**For a residuary legacy:** 'I give all/a fraction/a percentage of the residue of my estate absolutely to **St Wilfrid's Hospice, 1 Broadwater Way, Eastbourne, East Sussex BN22 9PZ, Registered Charity Number 283686**, to be applied by St Wilfrid's Hospice for its charitable purposes, and I further direct that the receipt of the Hon Treasurer or any other proper officer of St Wilfrid's, for the time being, shall be sufficient discharge to my trustees.'

**For pecuniary legacy:** 'I give to **St Wilfrid's Hospice, 1 Broadwater Way, Eastbourne, East Sussex BN22 9PZ, Registered Charity Number 283686**, absolutely, the sum of (amount in figures, amount in words) to be applied by St Wilfrid's Hospice for its charitable purposes, and I further direct that the receipt of the Hon Treasurer or any other proper officer of St Wilfrid's Hospice, for the time being, shall be sufficient discharge to my trustees.'

**For a specific gift:** 'I give to **St Wilfrid's Hospice, 1 Broadwater Way, Eastbourne, East Sussex BN22 9PZ, Registered Charity Number 283686**, absolutely, (write in here whatever you wish to give) to be applied by St Wilfrid's Hospice for its charitable purposes, and I further direct that the receipt of the Hon Treasurer or any other proper officer of St Wilfrid's Hospice, for the time being, shall be sufficient discharge to my trustees.'

However you choose to support St Wilfrid's, please ensure that any instruction clearly includes our unique **Registered Charity Number 283686**. This will ensure your gift arrives safely and promptly.



A celebration of the Platinum Jubilee at the hospice



Jan McGregor, a volunteer

# Glossary of Terms

**Estate:** The property, including money, owned by the deceased, after any debts and/or expenses have been taken into account.

**Beneficiaries:** People or organisations – for example, a charity – who benefit from a will.

**Executors:** Person(s) appointed in a will by the testator to deal with the estate after his/her death.

**Guardian(s):** Person(s) appointed in a will by the testator to look after his/her children, if there is no one else with parental responsibility to do so.

**Residuary gift:** A share of the estate (ie percentage) allocated in the will by the testator.

**Pecuniary gift:** A single, precise cash gift from the estate.

**A specific gift:** An individual valuable item, such as an antique or piece of jewellery.

**Testator:** A person who has made a will or given a legacy.



Our beautiful hospice gardens

Please write your details below, send in an envelope to the address listed below, and we'll be in touch soon. Thank you.

**Freepost RTHJ-JLBS-AKYG, St Wilfrid's Hospice, 1 Broadwater Way, Eastbourne, East Sussex BN22 9PZ**

- I have already included St Wilfrid's Hospice in my will. Letting us know this will help us to plan for our future. From time to time we invite those who have left legacies to exclusive supporter events, if you would prefer not to be contacted please indicate below.
- Please do not invite me to special events.

Please send me details about Make a Will Month.

I would like a member of the hospice Donor Development Team to contact me to discuss giving in wills.

Please write your details below:

Title	First Name	Surname
Address		
Postcode		
Telephone		
Email		

To find out more about leaving a gift in your will please visit our website here:  
**[stwhospice.org/make-a-will-month](http://stwhospice.org/make-a-will-month)**



**St Wilfrid's Hospice**

St Wilfrid's Hospice • 1 Broadwater Way, Eastbourne, East Sussex BN22 9PZ  
01323 434200 • [stwhospice.org](http://stwhospice.org) • [hospice@stwhospice.org](mailto:hospice@stwhospice.org) (non-clinical)

Registered Charity No: 283686

**Compassionate • Professional • Progressive • Respectful**





St Wilfrid's Hospice

St Wilfrid's Hospice • 1 Broadwater Way, Eastbourne, East Sussex BN22 9PZ  
01323 434200 • stwhospice.org • hospice@stwhospice.org (non-clinical)

Registered Charity No: 283686

Compassionate • Professional • Progressive • Respectful

